



**ALLFLO**  
PUMPS & EQUIPMENT

# Packaged Fire Protection Pumpsets



**Nische**<sup>TM</sup>**fire**

1800 333 424 | [www.allflo.com.au](http://www.allflo.com.au)



# Nische Fire

## Fire Protection Pumpsets

The Nische Fire range of Packaged Fire Protection Pumpsets were developed to meet the growing demand for specialized turn-key systems fully complying with relevant Australian Standards.

Support services are provided from initial engineering assistance through to on-site commissioning and after sales support.

Fire Protection Pumpsets are available in diesel and electric drive configurations assembled on a common fabricated base with pipework manifolds, valves, controls and accessories to provide a fully automated system.

Systems are engineered and fabricated in strict adherence to the relevant fire codes, including: AS2941, AS2419 and AS2118.

### System Configurations

- › Single Diesel Duty Pump
- › Single Electric Duty Pump
- › Diesel/Electric Duty Pump
- › Dual Diesel Duty Pump
- › Dual Electric Duty Pump
- › Integral hose reel jacking pump
- › Complete pipework manifolds or pumpset configuration only
- › FM/UL Approved Fire Systems
- › Enclosed Canopy Units
- › Acoustically Enclosed Units
- › Relay Pump Booster Systems
- › Vertical Turbine / Column Pump Designs
- › Mine Spec Approved Units

## The Nische Fire Advantage

### The Complete Package:

Nische Fire Protection Systems can be supplied incorporating engine accessories, rubber mounts, fuel tank, batteries, pressure relief valves, heat exchange cooling, etc. all interpiped and interwired on a common base.

### Remko Pumps:

Heavy duty Remko centrifugal pump units cover the full range of duty applications from 5l/s to 1000l/s and the range incorporates back pull out end suction, horizontal multistage, vertical column shaft and horizontal split case pumps.

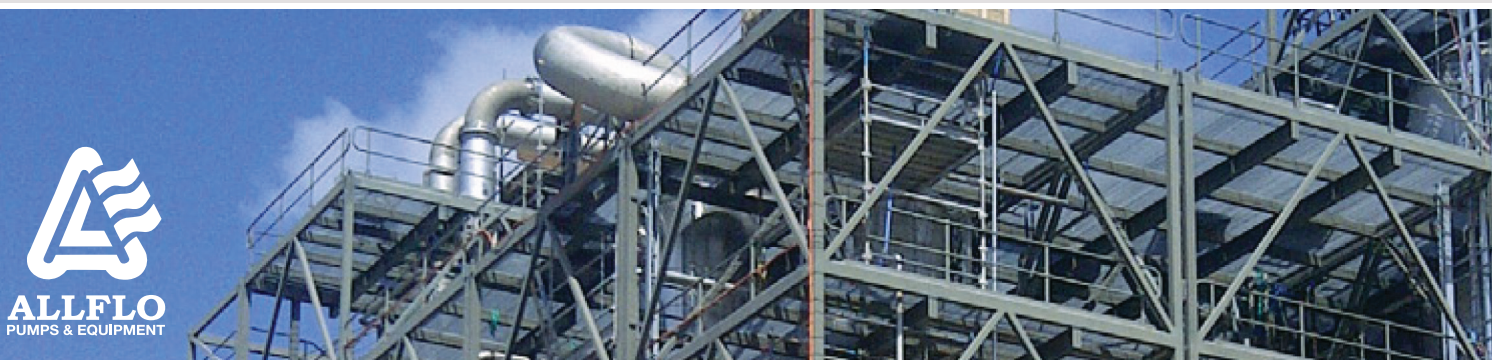
### Full In-House Manufacturing Facilities:

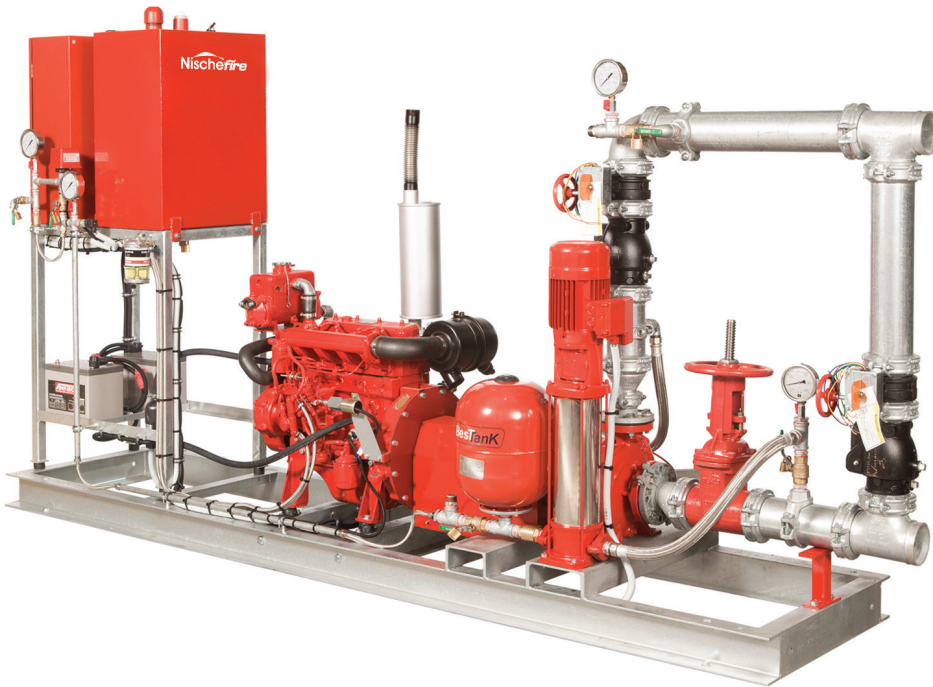
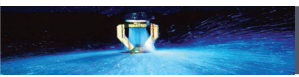
Nische Fire Packaged Pumpsets are fully fabricated in-house from base to pipework and accessories, giving ultimate control on quality, economics and project time frame constraints.

### System Flexibility:

Nische Fire has the capability to engineer a solution to the specific application. From a special size to suit an existing plant room to a code compliant system drawing from a below ground tank, the turn-key package will meet your requirements

- › Hospitals
- › Mining
- › Marinas
- › Public Buildings
- › Schools/Colleges
- › Commercial Development
- › Prisons/Detention Centres
- › High Rise Buildings
- › Shopping Centres
- › Apartments
- › Aged Care Facilities
- › Process / Manufacturing Plants
- › Industrial Development
- › Resorts
- › Child Care Facilities





## Nische Single Diesel Fireset

Allflo offers a comprehensive range of fire pumpsets, including “The Single Diesel”. The Nische Single Diesel is the most common unit, often used for hydrant boosting and sprinkler systems at schools, small hospitals, apartment buildings, abattoirs, industrial manufacturing plants and warehouses. We offer a turn-key, complete package which is tested in-house prior to delivery and built to a high quality standard.

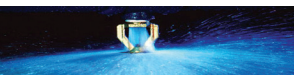


## Nische Dual Diesel-Electric Fireset

Allflo offers a comprehensive range of fire pumpsets, including “The Dual Diesel-Electric.” Our Nische Dual Diesel or Diesel-Electric unit is mounted on a common base. This unit is predominantly used for hydrant boosting or combined systems with sprinklers for schools, small hospitals, apartment buildings, abattoirs, industrial manufacturing plants and warehouses. We offer a turn-key, complete package which is tested in-house prior to delivery and built to a high quality standard.







# Packaged Fire Protection Pumpsets

Vertical multistage jackup pp mounted, plumbed, wired and ready for operation

Switchboard, fuel tanks and batteries all mounted on vibration isolators and incorporated on base plate – no additional mounting needed

CAD drawings available

Complete pumpset physically pretested prior to despatch

Complete pipework – no additional on-site installation required

UL/FM approved valves

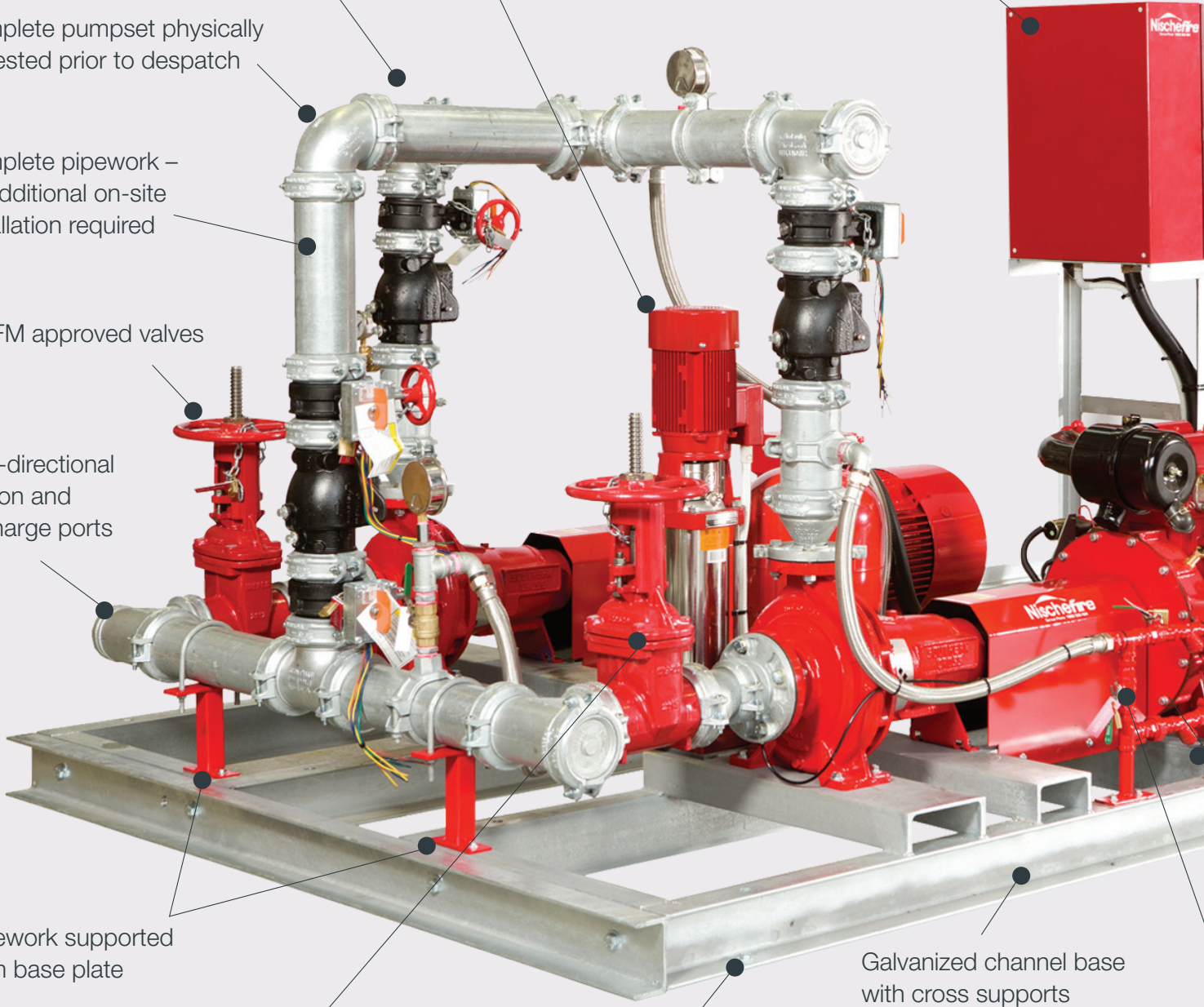
Multi-directional suction and discharge ports

Pipework supported from base plate

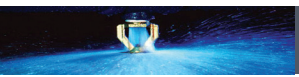
Valve monitors available

Pre-drilled anchor points on base

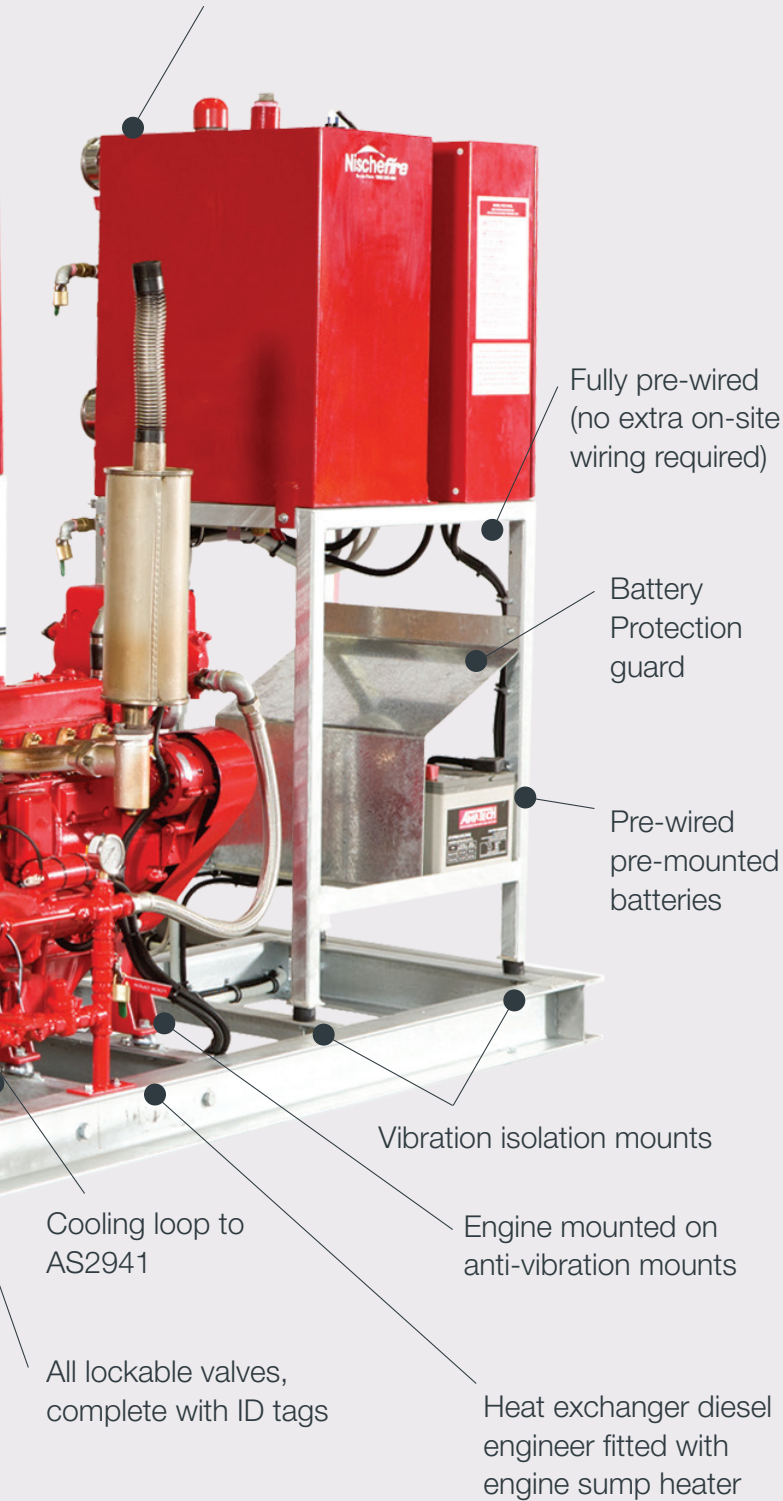
Galvanized channel base with cross supports







Pressure test assembly mounted close to control panel for ease of testing/operation



Fully pre-wired (no extra on-site wiring required)

Battery Protection guard

Pre-wired pre-mounted batteries

Vibration isolation mounts

Engine mounted on anti-vibration mounts

Heat exchanger diesel engineer fitted with engine sump heater

Cooling loop to AS2941

All lockable valves, complete with ID tags

## Nische Fire Hose Reel Booster Pumpsets

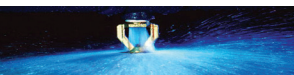
Allflo offers the Nische Hose Reel & Jacking Pumpsets. These units are electrically driven multistage pumps, mounted on a skid base with simple controls, pressure tank & needed valving. These units offer excellent value for money and everything to meet the Australian Standards AS2941.



### Features

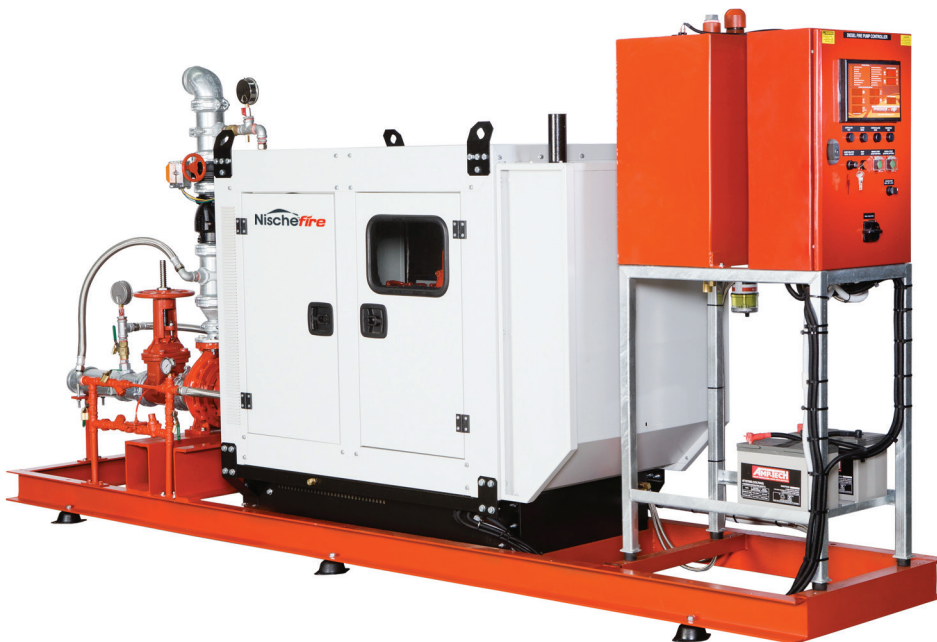
- › Heavy duty base
- › Unions on suction and discharge manifolds for ease of pump removal
- › Lockable isolating ball valves complete with 003 padlocks
- › Check valve on pump discharge
- › Dedicated test outlet
- › High quality pressure switch
- › Integrally mounted isolator switch with facility to lock on
- › 16 bar 24L pressure accumulator





## Nische Enclosed Fireset

Allflo have a range of enclosed fire pump units that are built in an enclosure. These quality Nische Firesets include all the standard benefits, but are built inside an enclosure, with lockable panel doors that contain the pump system. The benefits of the enclosed unit is that it required less time onsite for installation, it is neat and compact, with a vandal proof design and weather proof for equipment protection. These units are commonly used at schools, prisons and detention centres, public buildings, mine sites and other areas or remote locations.

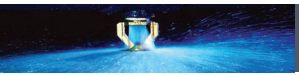


## Nische SilentPac Fireset

Allflo's Nische Fireset range also includes the SilentPac. These quality Nische Firesets include all the standard benefits, but are also fitted with a sound deadening acoustic enclosure mounted over the diesel engine. This means the dBa (noise rating) output is significantly reduced, making it an ideal fireset for use in areas such as university buildings, law courts, office blocks and other areas where noise pollution control is considered important.

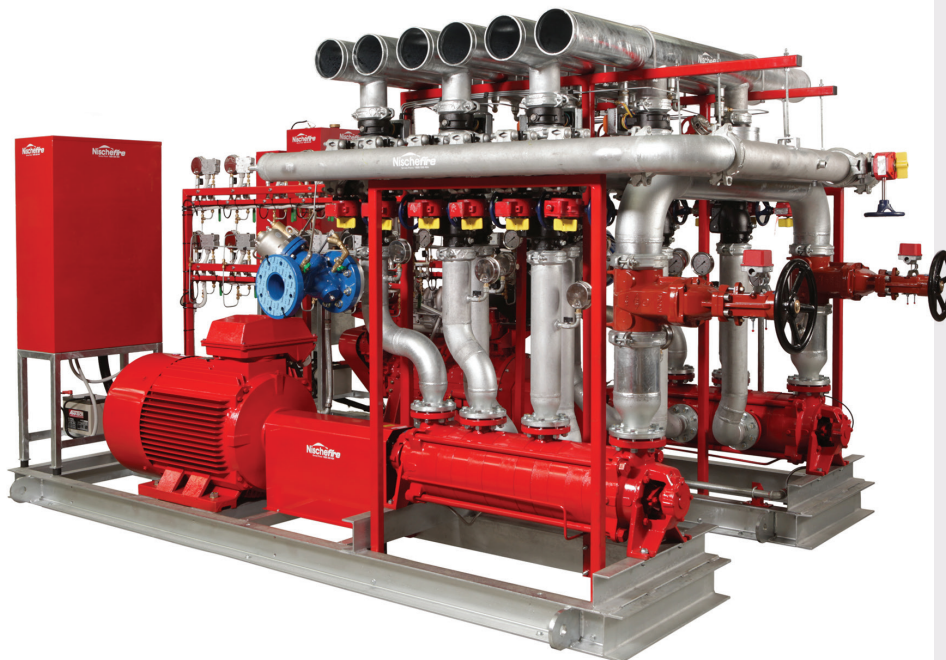






### 6 Pump Jacking Pump System

A separate jacking pump system skid made for pressurizing a highrise building fire system. This unit works in conjunction with a Multiport Dual Fire Pump System (See below).



### Nische Multiport Fireset

Allflo's Nische Fireset range also includes the Multiport Fireset. This pump packaged is primarily used in high rise buildings. Allflo has a keen interest in these sorts of pump systems as they require a high level of technical know-how, careful system design and strategy to supply a unique fire protection pump package built to exact design parameters that meets the stringent criteria of the consultants, owners, insurance suppliers, architects, builders and contractors. Here at Allflo, we have a proven track record, undertaking projects of world class calibre, and are ready to meet and exceed the needs of today's high-rise building developers.

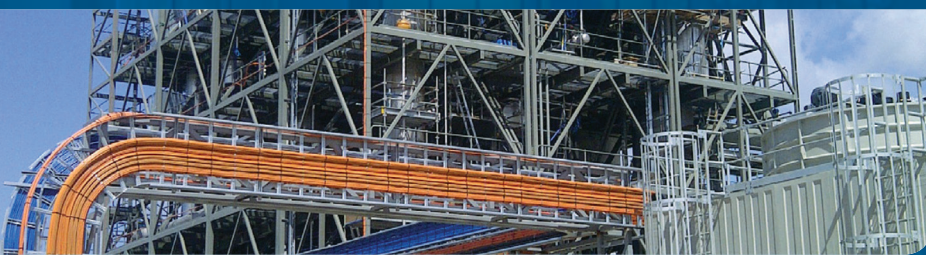
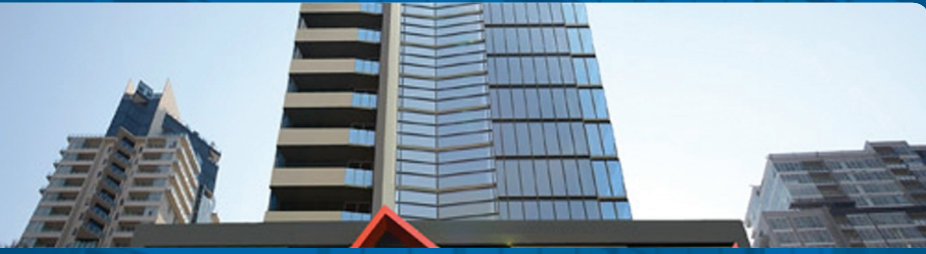






### Allflo's Business Partners

- › Fire Contractors
- › Consultants & Hydraulic Engineers
- › Plumbers & Plumbing Supply Companies
- › Fire Authorities
- › Building Contractors
- › End User Clients
- › Property Developers & Corporate Companies
- › Facilities Maintenance Contractors
- › Government Bodies
- › Certifiers & Fire Inspectors



SHEPPARTON - VIC  
ALBURY - NSW

Tel: 1800 333 424  
Tel: 03 5831 2220  
Fax: 03 5822 4160

Email: [sales@allflo.com.au](mailto:sales@allflo.com.au)  
Web: [www.allflo.com.au](http://www.allflo.com.au)

