



# Mining, Quarry & Civil Fluid Handling Product Overview



1800 333 424 | [www.allflo.com.au](http://www.allflo.com.au)

# Innovative Solutions for Industry

Originally formed as a family business, Allflo Pumps & Equipment have been actively involved in the pump industry for over 70 years.

Our product knowledge enables us to offer a full range of services from the initial consultancy through to final commissioning. Furthermore our fully equipped workshop and spare parts department offers a complete maintenance and reconditioning service for a wide variety of applications.

## Creating Solutions for Heavy Industrial Pumping Requirements

Striving to be the best takes determination and a desire for excellence.

## Trusted Reputation and Proven Performance

Allflo Pumps & Equipment has had years of research and development expertise. We have been meeting the challenging needs of our clients for many years by making sure they have the right equipment to satisfy their requirements.

Allflo Pumps & Equipment is the solution for all aspects of the food and beverage industry, industrial manufacturing, mining, waste water and environmental pumping needs.

## Customer Support

Our friendly, trained sales and service teams, with combined experience, work hard to ensure our customers receive the highest standards of support and service.

## Quality Guaranteed

Products are subject to stringent testing and re-testing requirements, using up-to-date technology and quality materials. We guarantee to provide the performance, quality and satisfaction that is required.

## Service and Back Up

Allflo Pumps & Equipment products are supported by an extensive range of spare parts, accessories and a fully equipped workshop to ensure your equipment is performing to its best.



## Remko Auto/Dry Priming Pumps

### Features and Benefits

- >> Prime with no assistance
- >> High performance, high efficiency
- >> Diesel or electric drive options
- >> Built to be tough
- >> Skid, trailer, acoustic enclosed or pontoon mount options
- >> Flows up to 2800 L/s
- >> Heads up to 260m

## Remko Wet Self Priming Pumps

### Features and Benefits

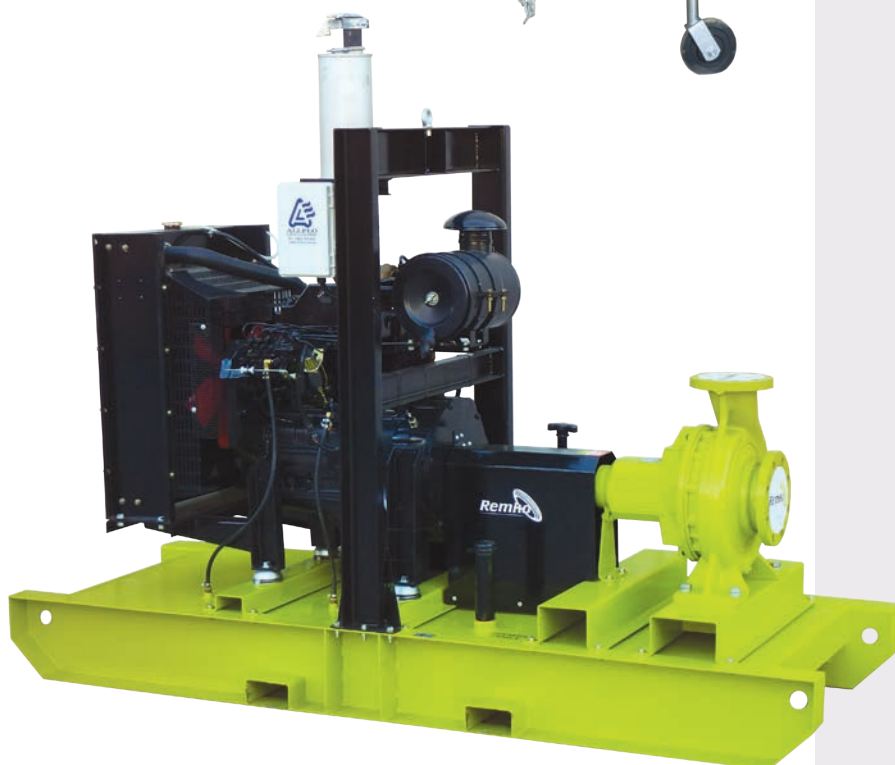
- >> Robust and reliable design
- >> Will self-prime
- >> Solids handling up to 75mm
- >> Diesel or electric drive options
- >> Skid, trailer, acoustic enclosed or pontoon mount options
- >> Easy maintenance accessibility
- >> Flows up to 165 L/s
- >> Heads up to 64m



## Remko End Suction Centrifugal Pumps

### Features and Benefits

- >> Pull back out design
- >> High efficiency, high performance
- >> Simple, low cost maintenance
- >> ISO and DIN standards available
- >> Diesel or electric drive options
- >> Skid, trailer, acoustic enclosed or pontoon mount options
- >> Flows up to 300 L/s
- >> Heads up to 165m

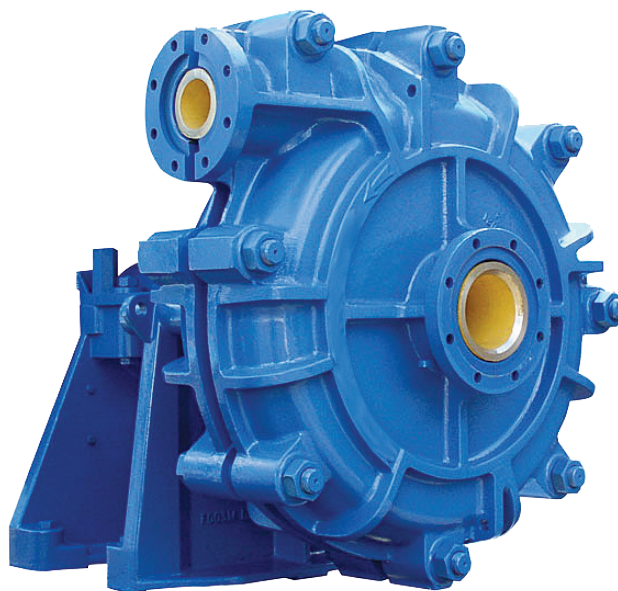




### ◀ Remko Submersible & Bore Hole Pumps

#### Features and Benefits

- » Heavy duty construction
- » 240, 415 and 1000 volt options
- » Solids handling
- » Designed for harsh mining and construction conditions
- » Suitable for low water level
- » Run dry capabilities



### ▲ Remko Slurry Pumps

#### Features and Benefits

- » Metal and rubber lined pumps available
- » Oversized bearings and casing
- » Heavy duty for abrasive media
- » High tech sealing options
- » Interchangeable with other brands
- » Extended pump life and efficiencies



### ◀ Allflo Air Operated Diaphragm Pumps

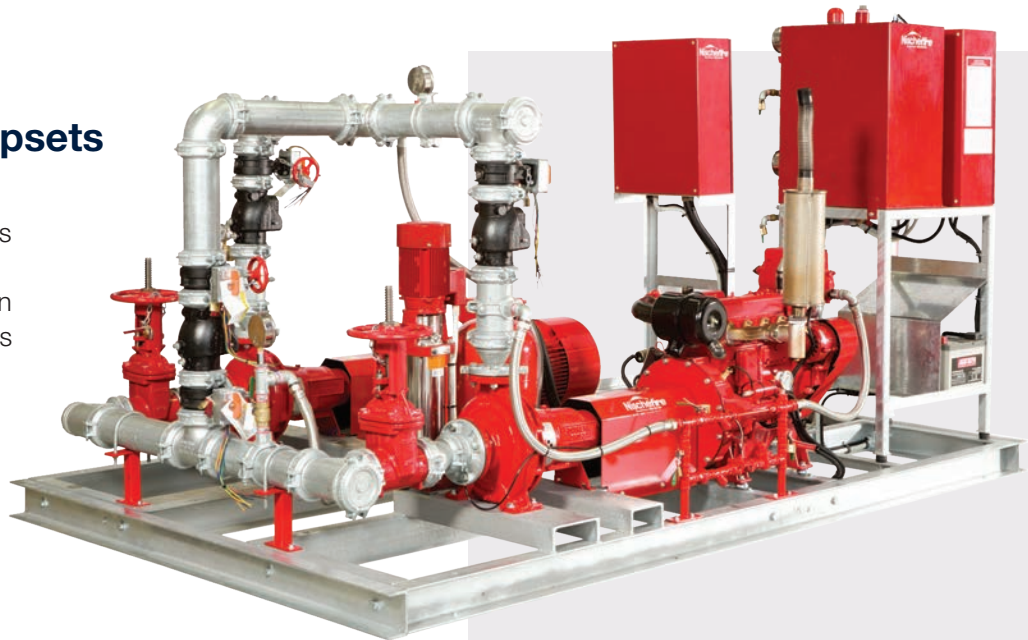
#### Features and Benefits

- » Reliable continuous performance
- » Simplest air motor design
- » Non-stall, non-freeze air system
- » Many different materials available
- » Corrosion resistant
- » Solids handling models available
- » ATEX certified
- » Made in America

## ► Nische Fire Protection Pumpsets

### Features and Benefits

- » Built to AS2941 standards
- » One common baseplate
- » Easy and quick installation
- » Canopy enclosed versions available
- » Customisation to suit all applications



## ◀ Cariba Vertical Multistage Pumps

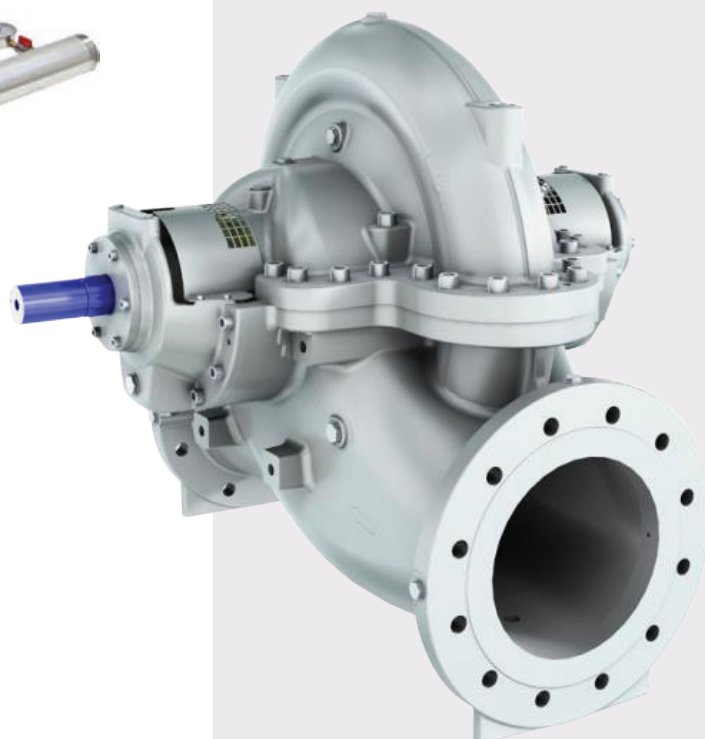
### Features and Benefits

- » High pressure, high efficiency
- » In-line design
- » Low maintenance costs
- » Stainless steel or cast iron construction
- » High corrosion resistance
- » Space saving

## ► Remko Horizontal Split Case Pumps

### Features and Benefits

- » Easy to service - split case design
- » Low life-cycle costs
- » Extended life of wear rings, seals and bearings
- » Minimised vibration and quiet operation
- » Service without moving pipework





## ◀ Remko and Cariba Positive Displacement Pumps

### Features and Benefits

- » Self priming
- » Efficient handling of abrasive and viscous materials
- » Chemical resistant material available
- » Consistent flows/pressures
- » Suitable for low shear product

## ▶ Cariba Magnetic Drive Pumps

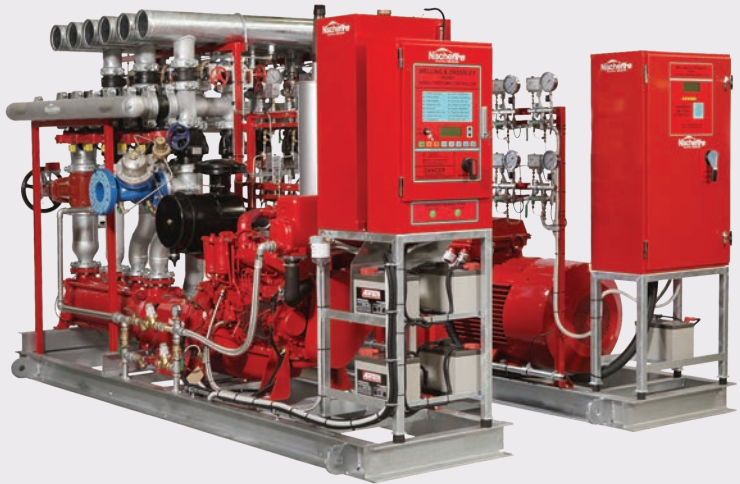
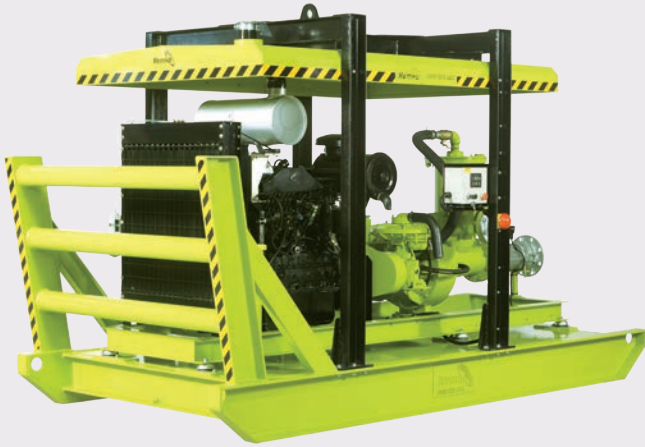
### Features and Benefits

- » Seal-less magnetic drive means zero leakage
- » Environmental protection
- » Ideal for acid and chemical transfer
- » Low operational and lifetime costs
- » Used with confidence in corrosive, hazardous, toxic and explosive areas
- » Self priming models available



## ◀ Other Products from Allflo Pumps

- » Generators
- » Lighting towers
- » Diesel engines
- » Valves and fittings
- » Suction and discharge hose
- » Spare parts





**MINING**



**OIL & GAS**



**QUARRYING**



**CIVIL CONSTRUCTION**



Tel: 1800 333 424  
Tel: 03 5831 2220  
Fax: 03 5822 4160

Email: [sales@allflo.com.au](mailto:sales@allflo.com.au)  
Web: [www.allflo.com.au](http://www.allflo.com.au)



TECHNOLOGY | EQUIPMENT | SOLUTIONS